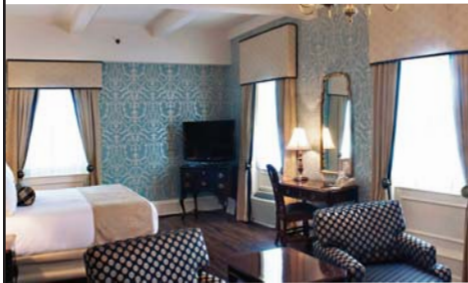


AS SEEN IN

A View for All Occasions



www.THEMOLLYPITCHER.com



STAY

The Molly Pitcher Inn offers first-class amenities with the sophistication of an elegant 19th century small luxury hotel and is among the most scenic luxury hotels in Central New Jersey. Choose from one of many guest rooms or suites appropriately appointed with a touch of old-world grandeur and first class comfort for all of your needs in luxury accommodations.

DINE

Under the crystal chandeliers of our Dining Room, we serve some of the most tantalizing cuisine in all of New Jersey. Our panoramic windows provide a truly breathtaking vista. No matter what season or time of day, the quiet stillness of the Navesink River envelops all who dine here.

PLAN

Whether it's your special day or renewing your vows, our historical Inn offers the perfect setting for your celebration. Envision your cocktail reception on our promenade on the banks of the Navesink River and dancing the night away in our water view Ballroom. A luxurious setting, impeccable service and remarkable food are all components that create an unforgettable Wedding.



Molly Pitcher Inn

Tradition. Elegance. Grace

THE MOLLY PITCHER • 88 RIVERSIDE AVENUE RED BANK, NJ 07701 • TEL: 732.747.2500

Women's Living®